

FOR LEASE—4,000 SF

379 W. Michigan Street, Orlando, FL 32806

South downtown Orlando between I-4/Michigan exit and Orange Ave.

For more information contact:

leasing@pineloch.com

Phone: (407) 859-3550



Property Highlights

- Approx. 4,000 SF includes:
 - +/- 1,995 SF office space and
 - +/- 2,005 SF warehouse space
- Convenient to I-4 / Orange Ave.
- South downtown Orlando
 - Office / Medical Office
 - Dock high rear elevation
 - 103 ft. truck court
 - Direct parking lot access
 - Parking ratio 5.2/1000





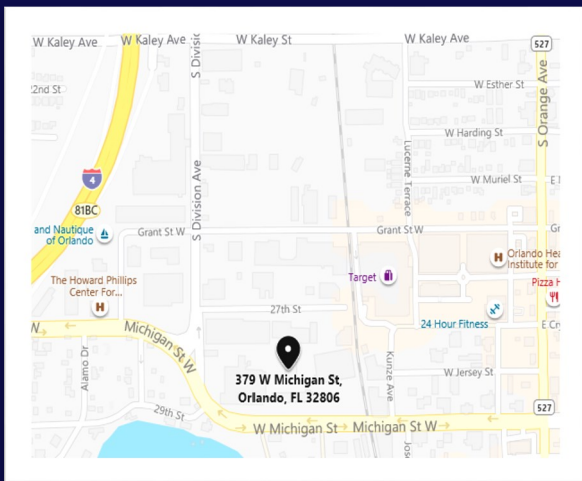
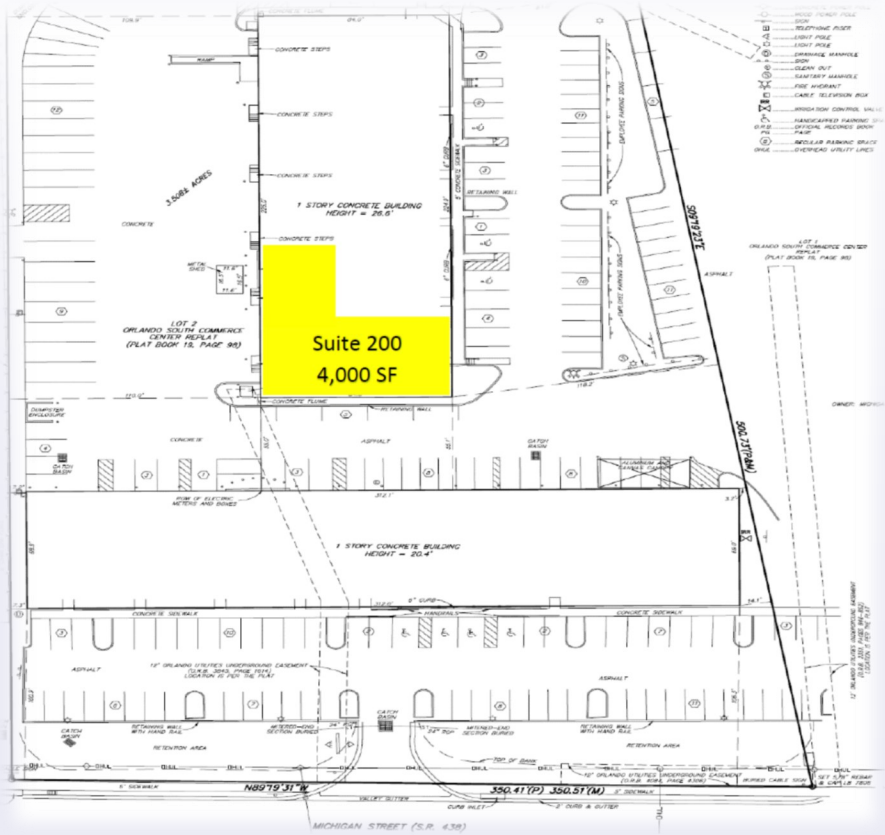
FOR LEASE—4,000 SF

379 W. Michigan Street, Orlando, FL 32806

Approximately 4,000 SF of space (which includes +/- 1,995 SF of office space and +/- 2,005 SF of warehouse space) is located within the building floorplan as highlighted in yellow below:

Economics

- Lease Rate: \$23 NNN
- Term: Negotiable
- TI Allowance: Negotiable



For more information contact:
leasing@pineloch.com
 Phone: (407) 859-3550