

345 West Michigan Street South Downtown Orlando



FOR LEASE • 3,837 SF



For Further Information Contact:

Greg Wilson

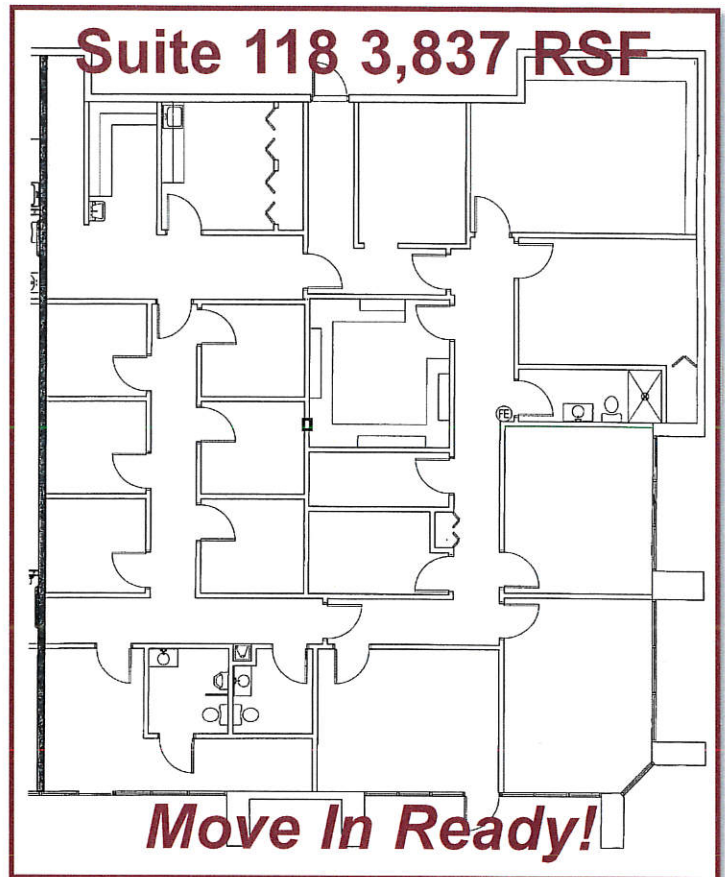
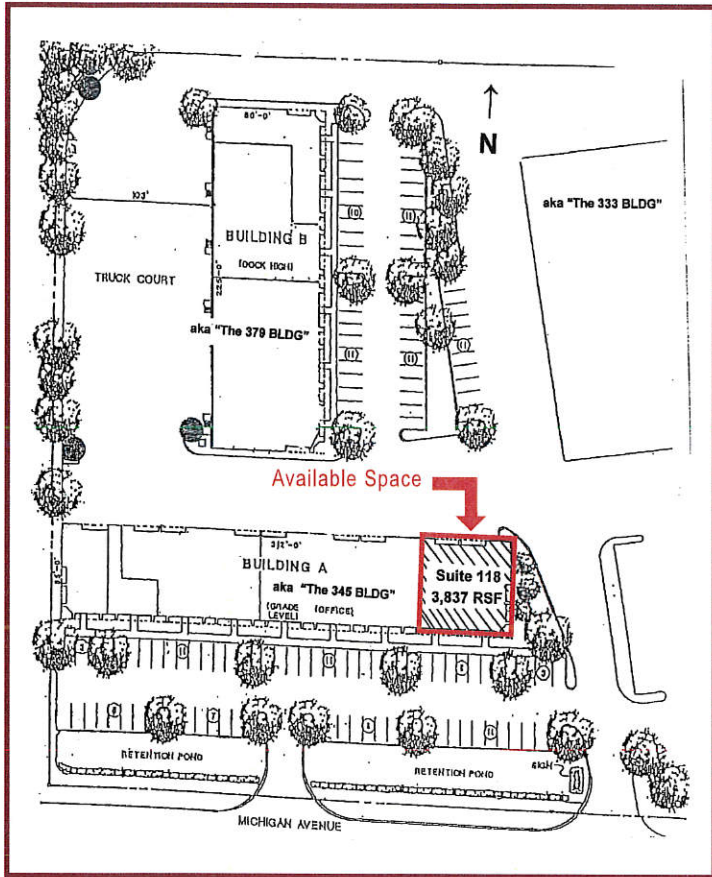
Director – Leasing & Property Management

O 407.859.3550 Ext 203 C 407.388.5844

greg@pineloch.com

Website: www.pineloch.com

SOUTHPOINTE



SOUTHPOINTE BUILDINGS

The buildings are located 2.4 miles South of the downtown Orlando city center, and is less than one mile from I-4 access at Michigan Street and Kaley Street with nearby access to SR 408. Former medical office, potential "move in ready", close to the Orlando Health medical campus. Grade level space is fully air conditioned one-story tilt up concrete wall construction with a flat built up roof and the ability to install grade level overhead doors. The location provides frontage and building signage visibility directly on Michigan Street. Within walking distance to retail and restaurants in the SODO corridor and the Market at Southside Shopping Center and is located 1.5 miles from the nearest Sun Rail station at Orlando Health/Amtrak on Sligh Boulevard.

345 West Michigan

- Suite 118
- 3,837 RSF
- Former Medical Space
- 100% Office

345 West Michigan faces West Michigan Street containing approximately 20,000 leasable square feet, multi-tenant, with storefront and rear elevation at grade.